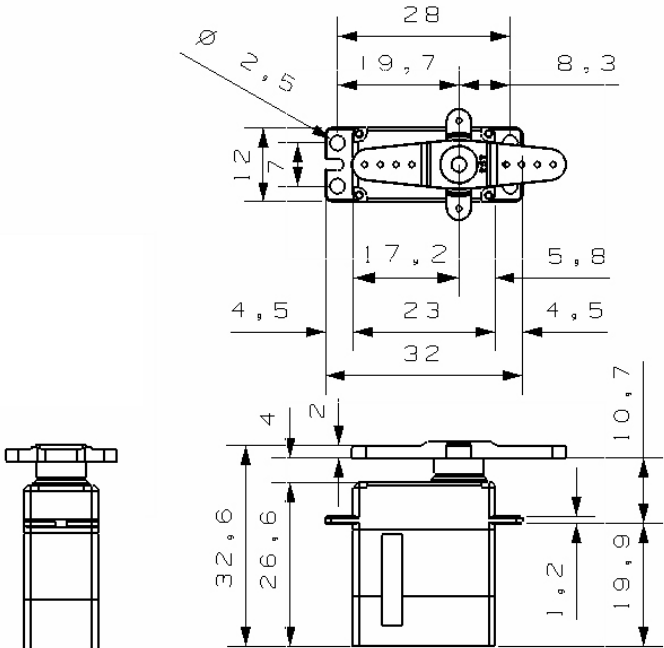




# MR320

## Technical Specification





# Operating Data

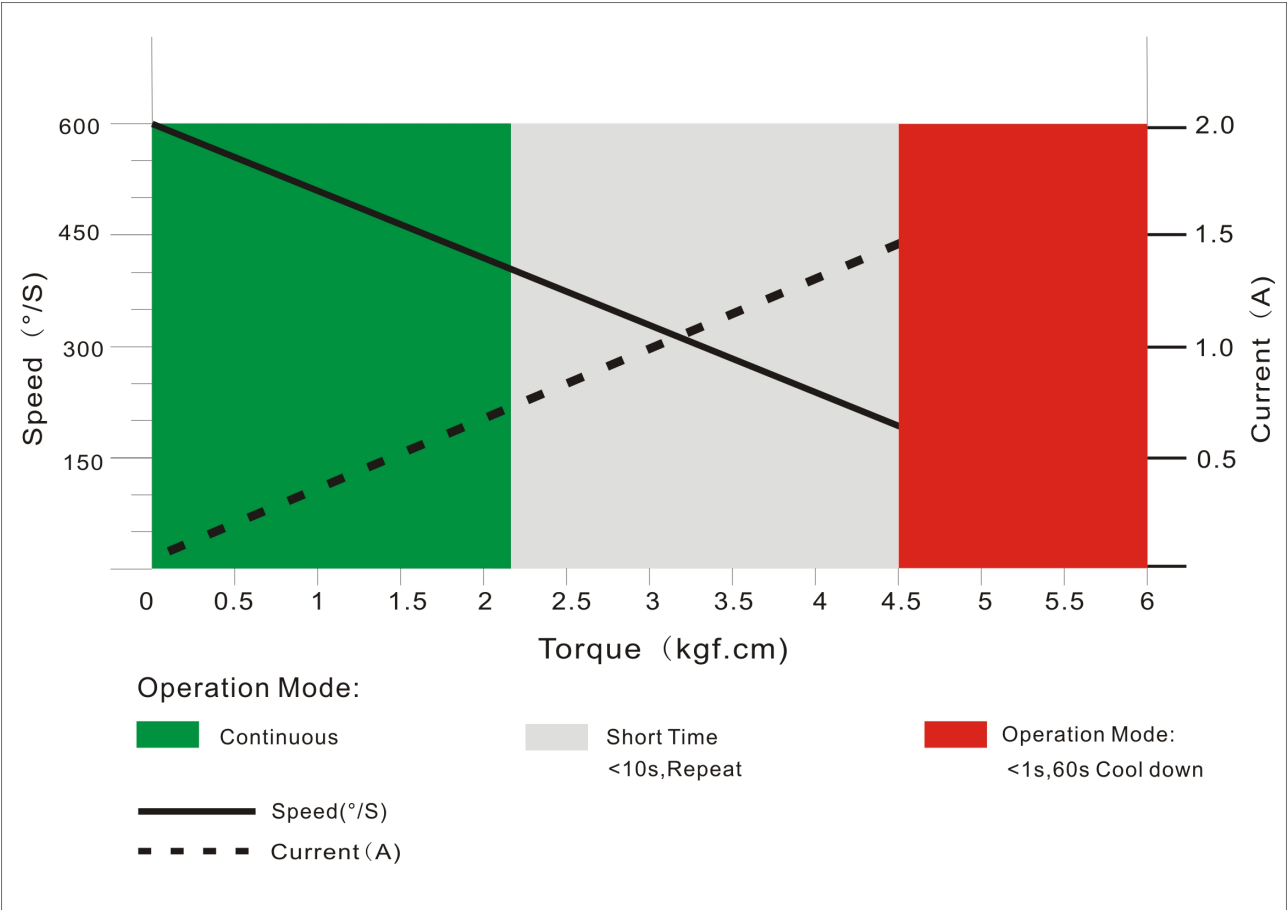
	<b>MR320</b>
<b>Operation Voltage(rated)</b>	DC7.4V
<b>Operation Voltage Range</b>	DC4.8V-8.4V
<b>Torque</b>	4.50Kg.cm@6.0V
	5.50Kg.cm@7.4V
<b>Speed</b>	0.09sec/60°@6.0V
	0.08sec/60°@7.4V
<b>Travel Angle</b>	± 180° when 500-2500us
	± 90° when 1000-2000us
<b>Operating Temperature Range</b>	-20°C.....+65°C



# Performance

MR320

@6V





## PWM Command Signal

PWM	MR320
Signal Voltage	TTL-Level: HIGH:min.3.3V,max.5.0V TTL-Level: Low:min.0.0V,max.1.5V
Pulse Lengths	500-2500us
Pulse Lengths for Position -180° /center/+180°	500us/1500us/2500us
Resolution	<2us

### Materials and protective features

Case Material	Aluminum Alloy
Splash Surface Treatment	
Salt Water Resistance	
EMI/RFI Shielding	
Motor Type	Coreless
Gear Set Material	Hardened Steel
Position Sensor	Contactless
Position Feedback	Optional
Shielded Connecting Cable	26AWG

### Dimensions

Case Dimensions	23*12*27.5mm
Weight	21g